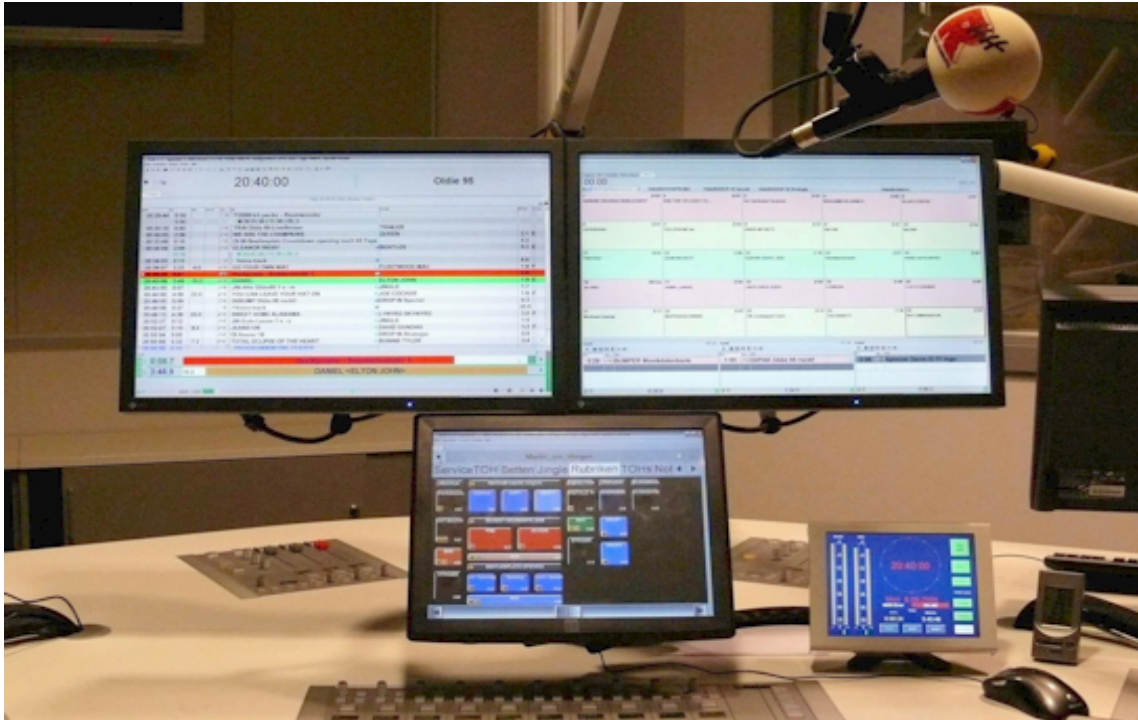


SJM - the Smart Jingle Machine

The Dream of each Moderator, presenting the DJ's creativity live ON-AIR

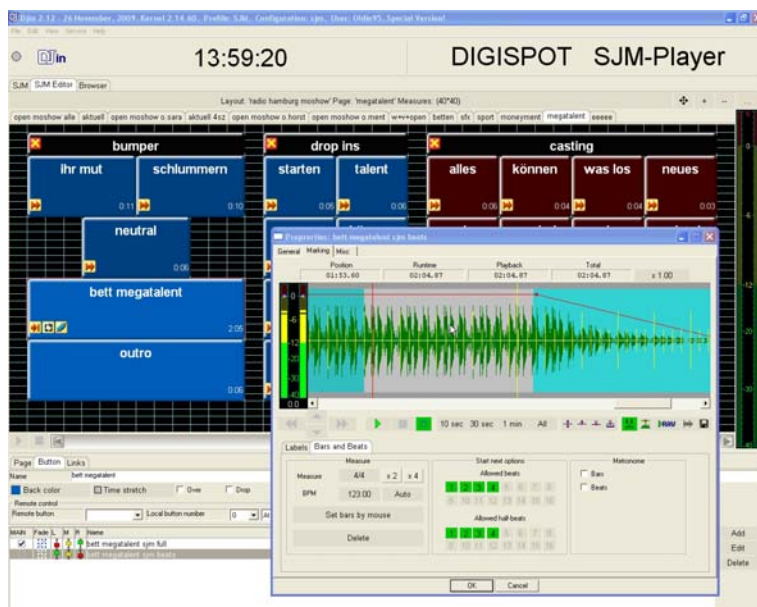


SJM - the Touch Screen controllable “Smart Jingle Machine”

A new functionality for the DIGISPOT®II Radio Broadcast System.

Available also as self standing system including SQL database !

- Rhythm Control means time change without pitch change to create a wide range for a musically, seamless matching of rhythm for the overlay to the particular music bed.
- Exact event start to a selected bar of the music bed
- Play-out by sound element buttons on a touch screen with automatic interactive start control marked by colour of related buttons.
- Touch screen fader for controlling sensitively the intensity of the sound structure for the bed to adapt to the overlay.
- Setting of loops in unlimited length, unrecognisable precise start in the beat structure
- SJM Editor for creating the sound design and the preparation of multiple play-out button screens
- Working as network installation with access to the network sound archive database.
- Online transfer of new prepared touch screen layouts for team work between sound design producer and moderator with reserve content storage on play-out station with self ministration.
- Access rights administration by active directory for managing group control for multiple ON-AIR programs.
- Interactive flexible remote control between different play-out stations via network or GPI/O.



DIGISPOT® has been the first of such systems providing a compliant exchange of the Cart-Wall filled with NAB-cartridges by direct access at a PC video monitor. It became well known under the name CartAssist. Based on the success and the Experiences made with CartAssist the user required the next step to be developed, a **Smart Jingle Machine SJM** which is now available as a new Module in DIGISPOT®II with extended opportunities to produce a smooth, musically ON-AIR performance.

The access to the sound element library of the DIGISPOT®II SQL meta database of the station network is self-evident to support a productive workflow for the producer and moderator.

The **SJM** can also be set up as a stand-alone system with it's own SQL meta data base. Interfacing to third party data base structures might be possible if required.

The **SJM** is the first software module of the DIGISPOT®II radio broadcast operating system which is not anymore orientated to logistic functions for Production and ON-AIR presentation, it now provides creative and musically possibilities for individual ON-AR performances. It is now possible for the sound designer (producer) to present musically performances of a DJ for their ON-AIR sessions.

Can you imagine, how attractive it might be when the soccer fans are shouting "Goal-,Goal-,Goal-,..." and it appears in the rhythm structure of the underneath playing music bed, also harmonically adapted to the selected music bed. Further more having the possibility to control sensitively the intensity of the sound structure to optimise the speech recognition of the talk-over.

A perfect software algorithm for time stretch without pitch change does allow for a wide range for a musically, seamless matching of rhythm for the overlay to the particular music bed.

The setting of a loop function is performed by a special algorithm within a music bed underlay, sound effect, or Jingle, in a length of free choice and inaudible in the adaptation to the rhythm structure.

The *SJM* software has two modules, the Player for the ON-AIR studio with a touch screen for the control access in the ON-AIR session and the *SJM*-Editor application for the ON-AIR Designer of production to prepare the music beds, Jingles and sound effects to free designable buttons on multiple screen layouts, each one with different pages. Whereby it is even possible to set control commands to this buttons for interactive automatic follow up start, or indicating with a changing colour for the Moderator which sound elements are defined by the sound designer to fit harmonically as next to the just started music bed. This is possible as an on line procedure between the sound designer (producer) and the moderator in the studio.

Further on remote control commands can be set to the sound elements to initiate by GPO or Ethernet start commands for related functions as example the ARI command for the car radio.

The *SJM* does now allow for the Moderator to perform his sessions with the perfection of a skilled DJ.