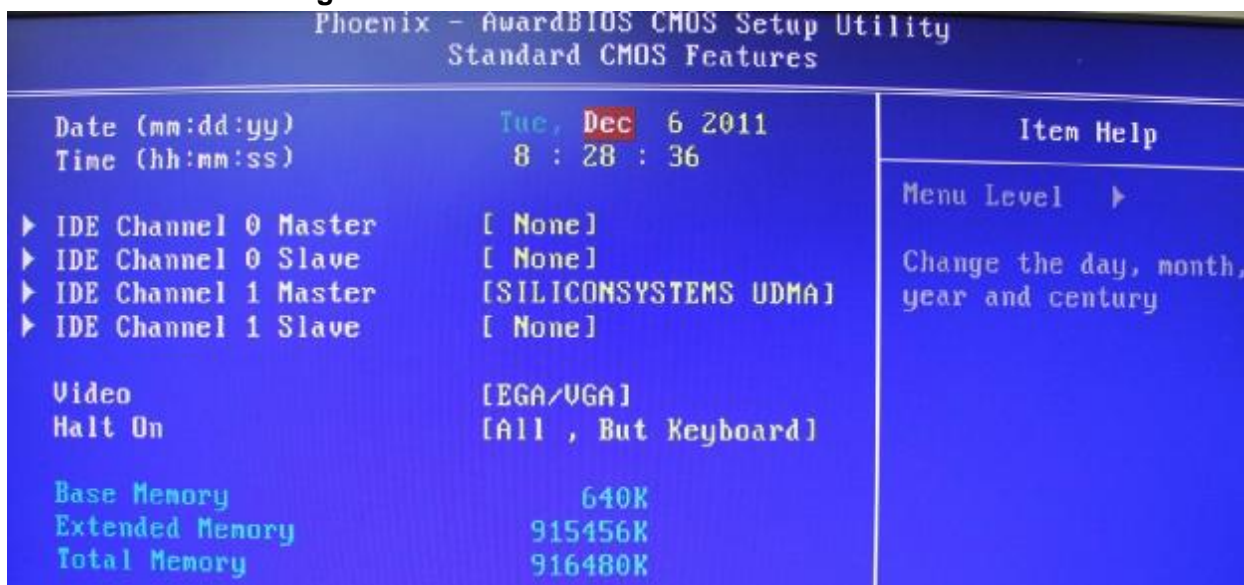
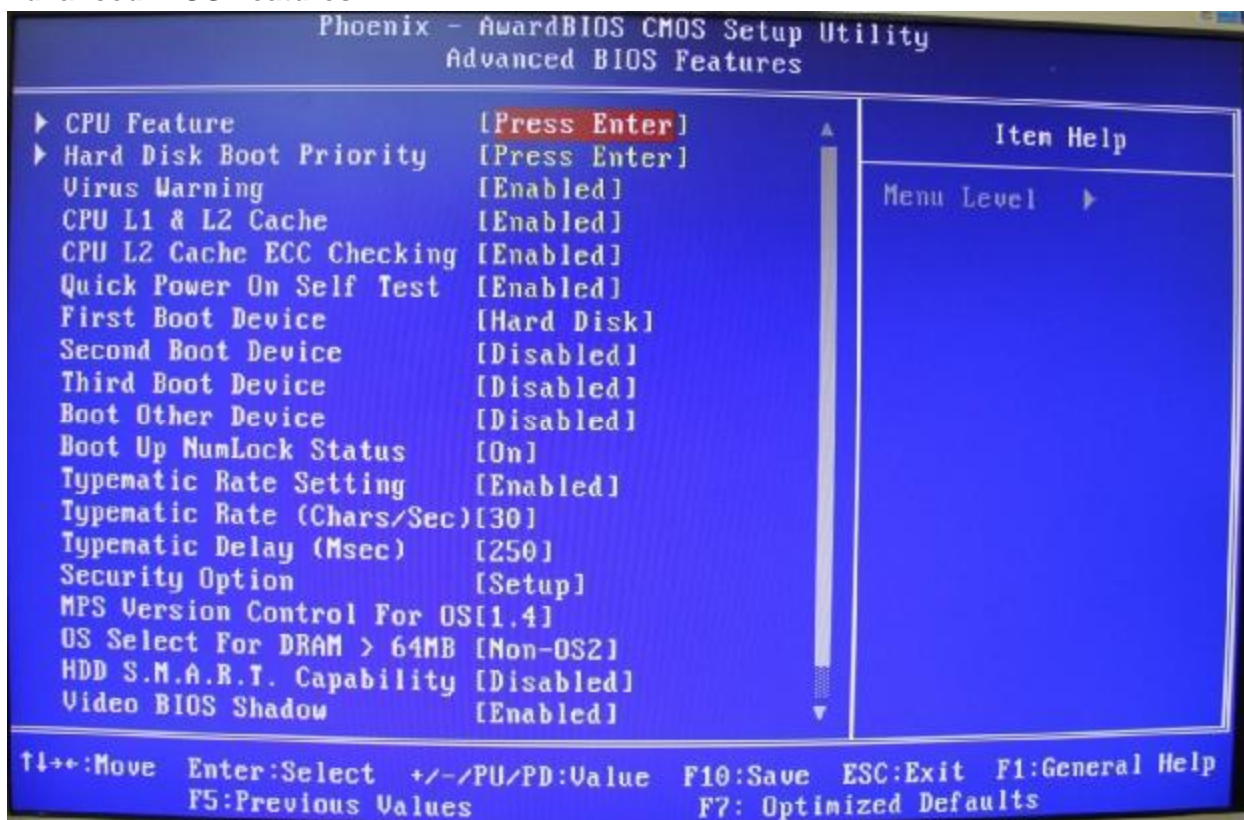


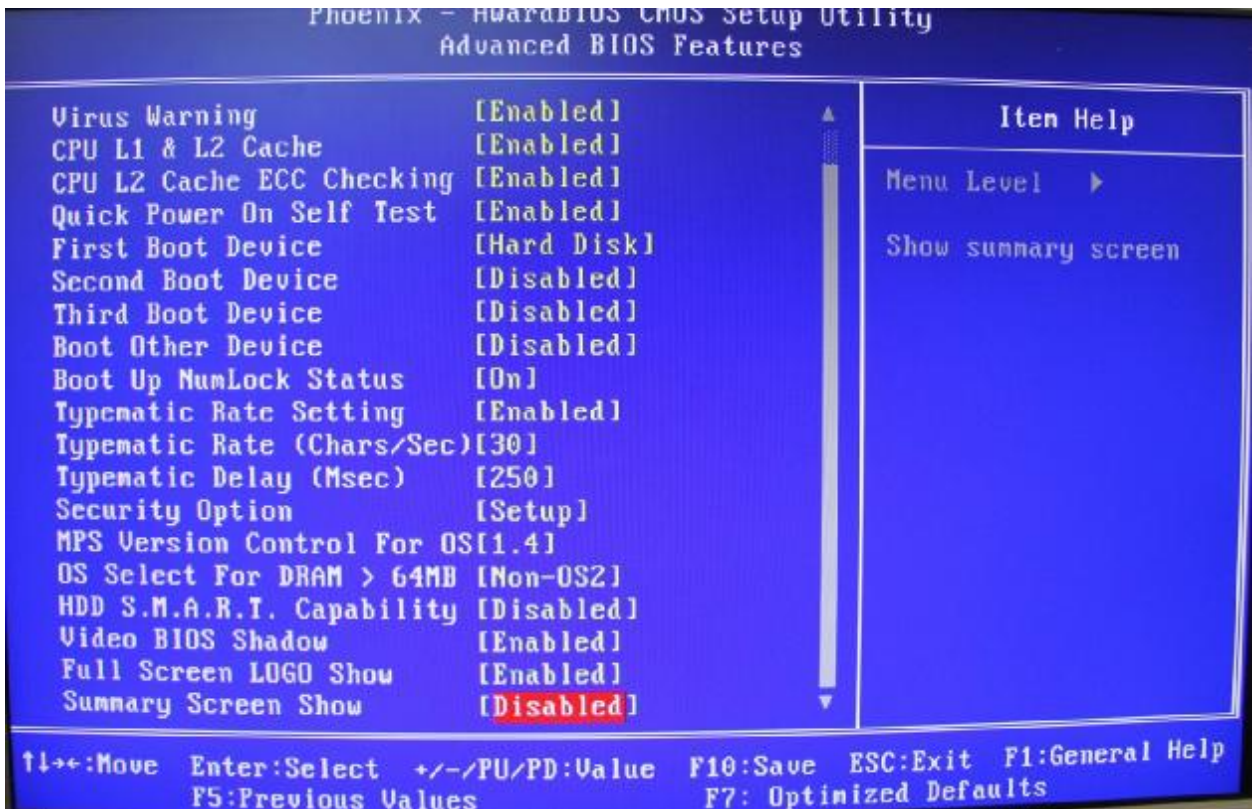
**Настройка BIOSа материнской платы EPIA-M830-10VE в для AXIA Element GPIO +Power Supply, Part# 2001-00170**

**Standard CMOS Setting:**

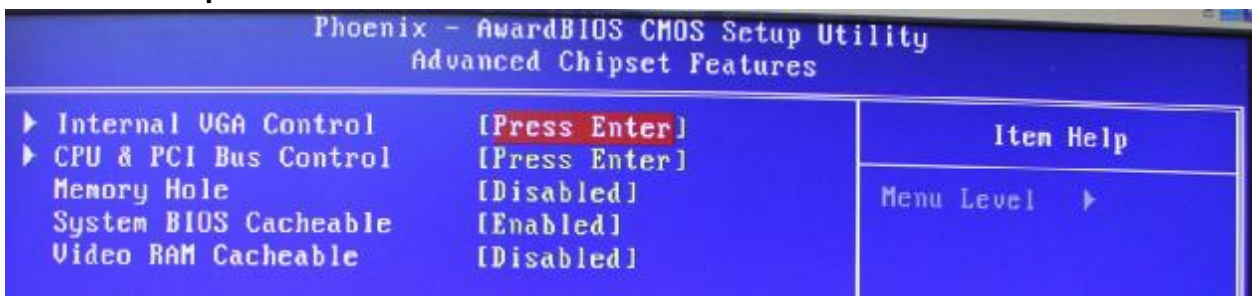


**Advanced BIOS Features:**

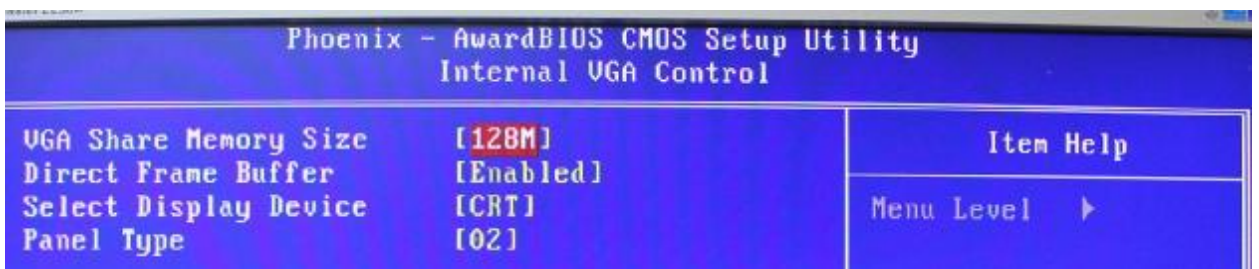




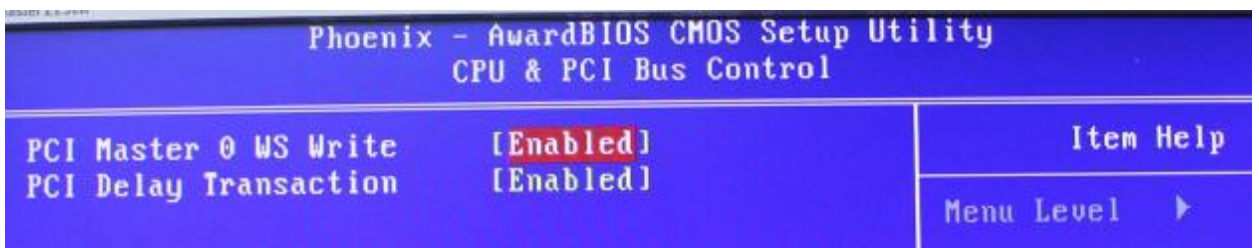
#### Advanced Chipset Features:



#### Internal VGA Control:



#### CPU & PCI Bus Control:





**Integrated Peripherals:**

Phoenix - AwardBIOS CMOS Setup Utility Integrated Peripherals		
▶ VIA OnChip IDE Device	[Press Enter]	Item Help
▶ VIA OnChip PCI Device	[Press Enter]	Menu Level ▶
▶ SuperIO Device	[Press Enter]	
▶ USB Device Setting	[Press Enter]	
OnBoard LAN Boot ROM	[Disabled]	

**VIA OnChip IDE Device:**

Phoenix - AwardBIOS CMOS Setup Utility VIA OnChip IDE Device		
IDE DOM UDMA66	[Enabled]	Item Help
SATA Controller	[Disabled]	Menu Level ▶  Enable it to support UDMA66 when IDE channel just only CF Card.
IDE DMA transfer access	[Enabled]	
OnChip IDE Channel1	[Enabled]	
IDE Prefetch Mode	[Enabled]	
Secondary Master PIO	[Auto]	
Secondary Slave PIO	[Auto]	
Secondary Master UDMA	[Auto]	
Secondary Slave UDMA	[Auto]	
IDE HDD Block Mode	[Enabled]	

**VIA OnChip PCI Device:**

Phoenix - AwardBIOS CMOS Setup Utility VIA OnChip PCI Device		
Azalia HDA Controller	[Auto]	Item Help
		Menu Level ▶

**SuperIO Device:**

Phoenix - AwardBIOS CMOS Setup Utility SuperIO Device		
Internal Serial Port 1	[3E8/IRQ5]	Item Help
Internal Serial Port 2	[2E8/IRQ10]	Menu Level ▶
Onboard Serial Port 3	[3F8/IRQ4]	
Onboard Serial Port 4	[2F8/IRQ3]	
Onboard Parallel Port	[378/IRQ7]	
Parallel Port Mode	[SPP]	
EPP Mode Select	EPP1.7	
ECP Mode Use DMA	3	
Onboard Fast IR	[Disabled]	
Fast IR IRQ	6	
Fast IR DMA	6	

### USB Device Setting:

Phoenix - AwardBIOS CMOS Setup Utility		Item Help
USB Device Setting		
USB 1.0 Controller	[Enabled]	Menu Level ▶ [Enable] or [Disable] Universal Host Controller Interface for Universal Serial Bus.
USB 2.0 Controller	[Enabled]	
USB Operation Mode	[High Speed]	
USB Keyboard Function	[Enabled]	
USB Mouse Function	[Enabled]	
USB Storage Function	[Enabled]	
*** USB Mass Storage Device Boot Setting ***		

### Power Management Setup:

Phoenix - AwardBIOS CMOS Setup Utility		Item Help
Power Management Setup		
ACPI Suspend Type	[S1(POS)]	Menu Level ▶
Power Management Option	[User Define]	
HDD Power Down	[Disable]	
Suspend Mode	[Disable]	
Video Off Option	[Always On]	
Video Off Method	[V/H SYNC+Blank]	
MODEM Use IRQ	[3]	
Soft-Off by PWRBTN	[Instant-Off]	
Run UGABIOS if S3 Resume	[Auto]	
Ac Loss Auto Restart	[On]	
WatchDog Run/Stop	[Stop]	
WatchDog Count value	[ 1023]	
▶ Wakeup Event Detect	[Press Enter]	

### Wakeup Event Detect:

Phoenix - AwardBIOS CMOS Setup Utility		Item Help
Wakeup Event Detect		
PS2KB Wakeup Select	[Hot key]	Menu Level ▶ When Select Password, Please press ENTER key to change Password Max 8 numbers.
PS2KB Wakeup Key select	[Any Key]	
PS2MS Wakeup Key Select	[Any Button]	
PS2 Keyboard Power ON	[Disabled]	
PS2 Mouse Power ON	[Disabled]	
RTC Alarm Resume	[Disabled]	
Date (of Month)	0	
Resume Time (hh:mm:ss)	0 : 0 : 0	



### PnP/PCI Configuration:

Phoenix - AwardBIOS CMOS Setup Utility		
PnP/PCI Configurations		
Init Display First	[Onboard]	Item Help
PnP OS Installed	[No]	
Reset Configuration Data	[Disabled]	Menu Level ▶
Resources Controlled By	[Auto(ESCD)]	
IRQ Resources	Press Enter	
PCI/UGA Palette Snoop	[Disabled]	
Assign IRQ For VGA	[Enabled]	
Assign IRQ For USB	[Enabled]	
** PCI Express relative items **		
Maximum Payload Size	[4096]	

### PC Health Status:

Phoenix - AwardBIOS CMOS Setup Utility		
PC Health Status		
System Fan Speed	0 RPM	Item Help
CPU Fan Speed	0 RPM	
5VSB	4.924 V	Menu Level ▶
+5V	4.964 V	
CPU Vcore	0.887 V	
3.3V	3.281 V	
+12V	12.183 V	

### Frequency/Voltage Control:

Phoenix - AwardBIOS CMOS Setup Utility		
Frequency/Voltage Control		
Current FSB Frequency	200MHz	Item Help
Current DRAM Frequency	333MHz	
Dram Frequency	[SPD]	Menu Level ▶
DDR CAS Latency Control	[SPD]	
DDR Burst Length	[SPD]	
DDR 1T Command Rate	[Disabled]	
DRDY table	[Optimize]	
ODT	[Enabled]	
Spread Spectrum	[+/- 0.1%]	

Выполнил: Фатеев О.О. (Olegf@tract.ru)