

APPLICATION NOTE

Connecting two Phoenix
Studio Audiocoders
through a
point-to-point IP radio link
operating in the 5 GHz
band



AEQ PHOENIX AUDIOCODECS. APPLICATION NOTE 4-B

Connecting two Phoenix Studio Audiocoders through a point-to-point IP radio link operating in the 5 GHz band

Configuration of the units via remote control software

1. DESCRIPTION OF THE SCENARIO

Recently several manufacturers have started to offer digital radio links with IP connectivity based on IEEE 802.11a, using extremely directive antennas that operate in a free RF band. These links can be used to transport data between several locations, to join venues of a same organization, or grant Internet access to places where ADSL is not available. The main features of these products are long range, low power consumption and nice cost effectiveness.

We are going to use them for bidirectional audio transport between two radio broadcast production centers in a same town, a radio studio and a transmitting center (STL, "Studio to transmitter link" application), or between a remote location where some event is being held and the radio studio.

We have evaluated two solutions with different cost and performance ranges.

Ubiquiti presents a wide range of systems with different performance levels and a very adjusted price that operate under the same setup/operation software platform, called AirOS v5, that is incorporated in the equipment as an embedded Web server. The IP Nanobridge M 5G22 system has been tested, but the procedure followed is very similar to tens of Ubiquiti products that are configured the same way.

On the other hand, we have also selected for our tests a system from Alvarion, BreezeNet B14. It is more costly, its configuration is less intuitive, but it is relatively capable without direct line-of-sight, a characteristic that can make it very useful in some cases where other equipments such as Ubiquiti's can't establish a link.

There are some other European and North-American manufacturers, each one with its own cost and functionality characteristics. But after the tests, we reached the conclusion that most of them will be able to work more or less easily with one or several pairs of Phoenix Audiocoders in order to send one or more bidirectional audio programs.

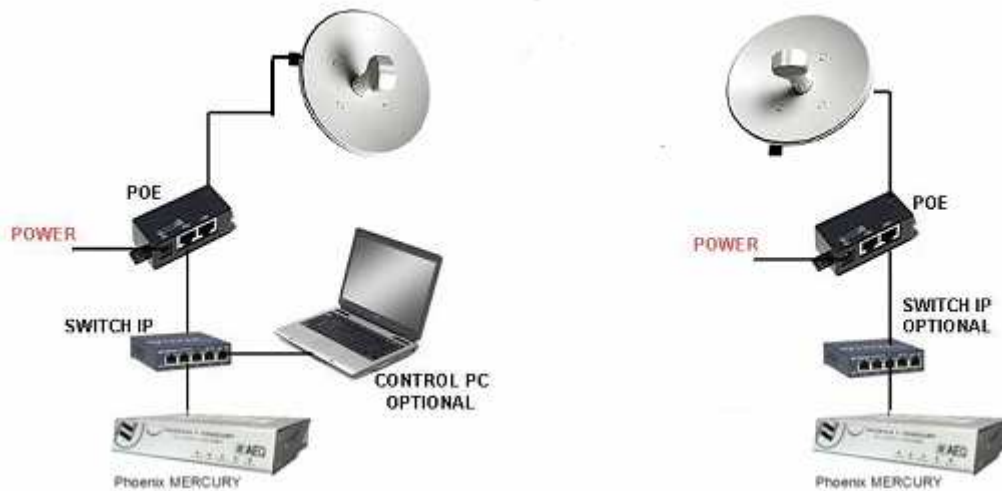
In fact, the large bandwidth offered by this kind of products allows sending one or more linear (uncompressed) audio channels through the same radio link (max. 2 stereo channels when using Phoenix Studio or Venus).

2. REQUIRED HARDWARE

RS-1: Two AEQ Phoenix family professional audiocoders (Phoenix Studio, Mercury, Venus or a combination of them, even more than one pair).

RS-2: Two Ubiquiti NanoBridge M 5G22, Alvarion BreezeNet B14 or similar antennas.

RS-3: Connecting cabling (4 Ethernet cables, 2 POE adapters).



Schematic of a radio STL setup based on AEQ Phoenix Mercury

3. INSTALLATION

- ✓ Install one antenna at each of the ends of the communication to be established.



Front and rear images of the Ubiquiti and Alvarion systems

The installation of each antenna is usually made with the included mounting hardware.

- ✓ Connect the AEQ Phoenix audiocoders to the NANOBRIDGE M 5G22 antennas in each end. The antennas are fed by means of POE adapters, that combine data and power supply to the same RJ45 cable that is connected to the radio system.
- ✓ Connect the mains cable to the POE adapter that is supplied with each antenna.



Ubiquiti and Alvarion POE adapters

- ✓ Connect the Ethernet cable between AEQ Phoenix (use NET1 connector if possible) and the POE unit.

IMPORTANT NOTE: use the "LAN" port for this connection, or permanent damage can be produced to the connected equipment.

RECOMMENDATION: install a small Ethernet switch between the audiocoder and the POE unit that will allow you to connect other equipments such as a laptop that will help in the remote configuration of all the equipments connected in this setup. This will also allow you to connect several audiocoders as needed for multichannel links. In the case of Phoenix Studio, only one of the Ethernet connectors at the back of the unit needs to be used, (i.e. ETH1).

- ✓ Connect an Ethernet cable from the POE adapter to the antenna back. Note that this port is labelled "POE" in the Ubiquiti unit and "Radio" in the Alvarion one.
- ✓ Connect the analog or digital audio inputs and outputs in the back of the AEQ Phoenix units. RECOMMENDATION: start with CH1 for this test.
- ✓ Connect the mains cords to each audiocoder.
- ✓ Turn all the units on.

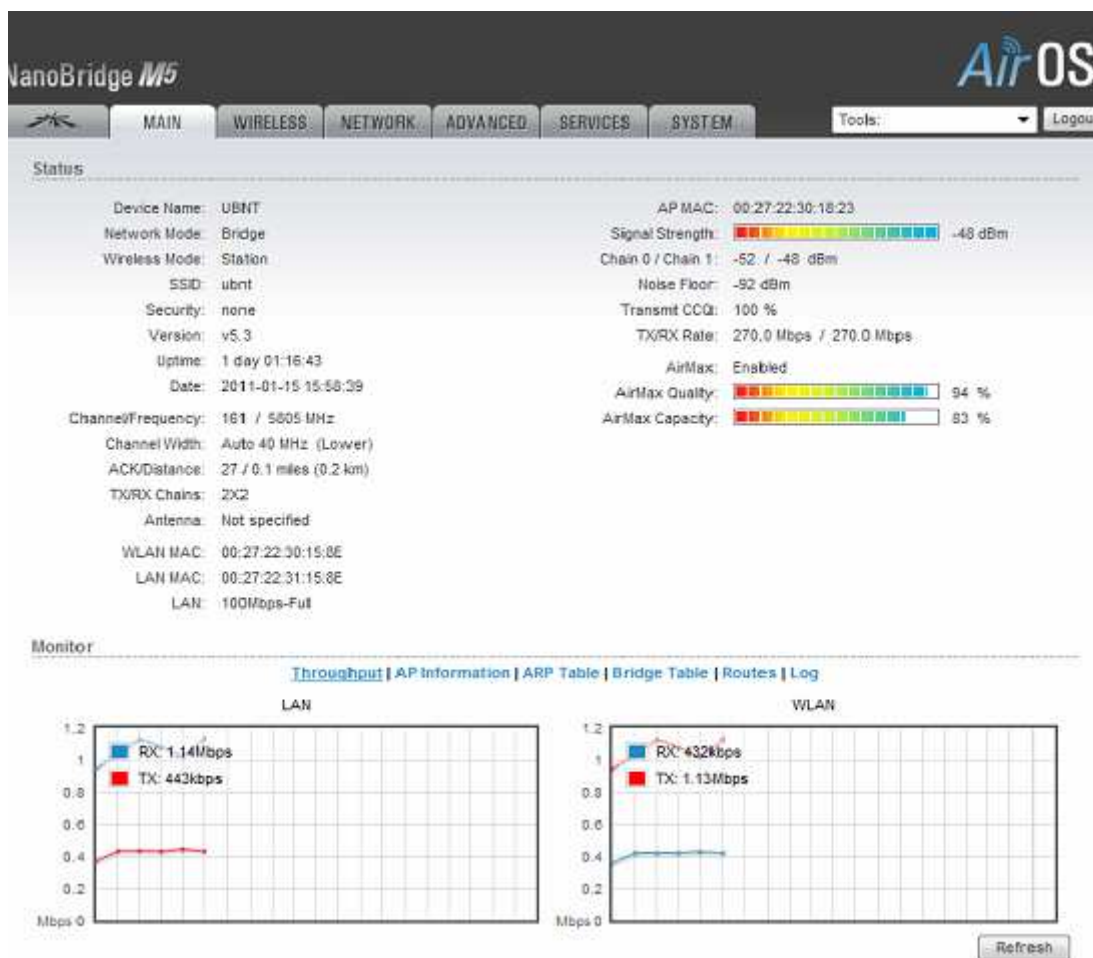
4. CONFIGURATION OF UBIQUITI NANOBRIDGE M 5G22 ANTENNAS

In order to setup a link between two Ubiquiti NANOBRIDGE M 5G22 or similar units, the Web server embedded in the antenna itself is used. We must have a computer connected to the each antenna, by means of a switch or a direct connection (in this case, we will substitute the PC by the audiocodec once the antenna is properly configured).

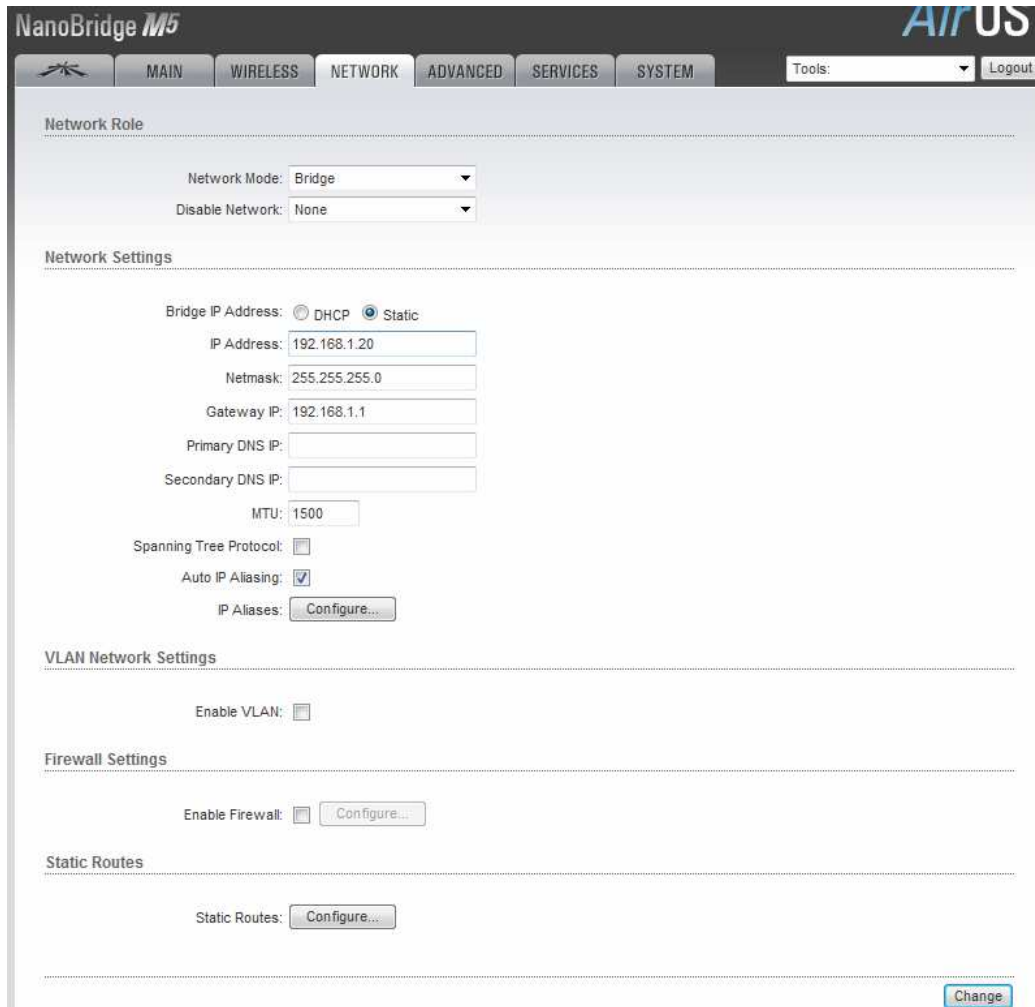
After having connected the PC to the Antenna, open a Web browser and type “<http://192.168.1.20>” in the URL bar (It may be necessary to configure the browser so it doesn't use a proxy for local addresses).

Once we are able to connect to the Nanobridge, we will be presented a small Windows where it asks for an username & password. By default we must type “ubnt” in both fields. After this step is completed, we will enter the main screen, that shows a summary of the link status, present values for the basic configuration (depending on the operating mode), network parameters and traffic statistics of all the interfaces.

Network administration parameters, monitoring utilities as well as a useful antenna-alignment tool, ping, traceroute and speed tests are also accessible from the main screen.



- First of all, it is important that we change the IP addresses of at least one of the units, from the default value (192.168.1.20) to a different one, i.e. 192.168.1.21. In order to do that, just click on the Network tab:

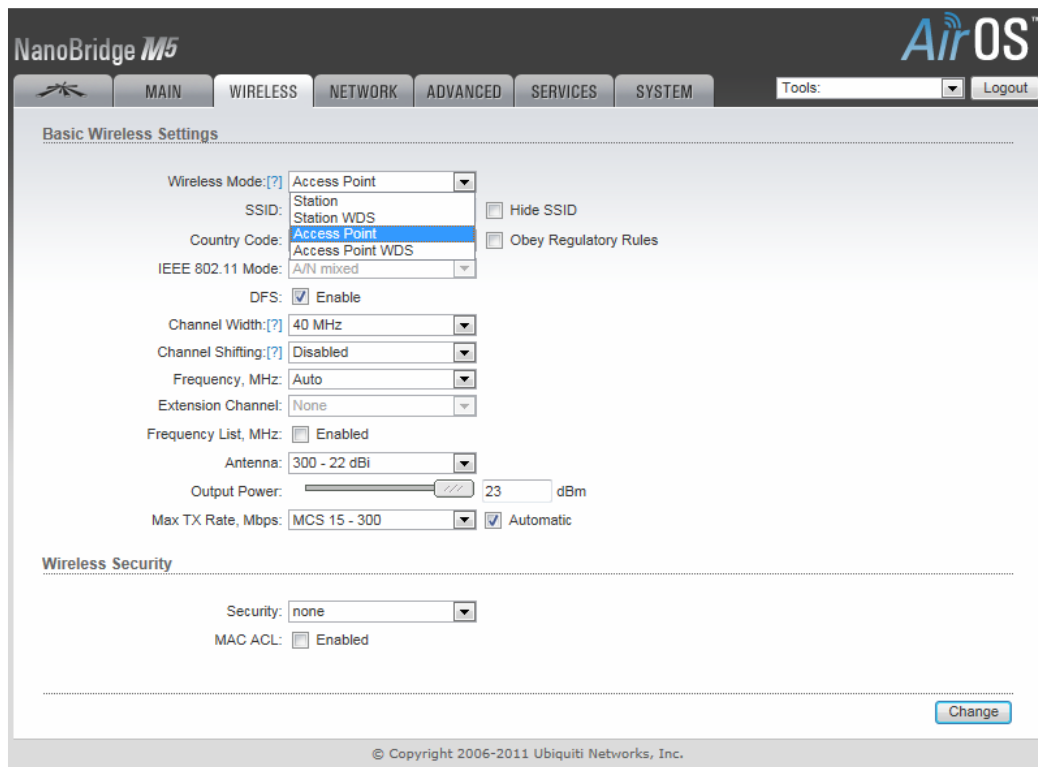


The screenshot shows the 'Network Settings' section of the NanoBridge M5 web interface. The 'Network Mode' is set to 'Bridge' and 'Disable Network' is set to 'None'. Under 'Network Settings', 'Bridge IP Address' is set to 'Static' with an IP address of 192.168.1.20, a netmask of 255.255.255.0, and a gateway IP of 192.168.1.1. Other options include 'Spanning Tree Protocol' (unchecked), 'Auto IP Aliasing' (checked), and 'IP Aliases' (with a 'Configure...' button). The 'VLAN Network Settings' section has 'Enable VLAN' unchecked. The 'Firewall Settings' section has 'Enable Firewall' unchecked with a 'Configure...' button. The 'Static Routes' section has a 'Configure...' button. A 'Change' button is located at the bottom right of the page.

The new address (192.168.1.21) must be typed inside the “IP Address” field. Next click on “Change” button in order to apply the changes. Finally, we will be presented a window on the top part of the screen in order to confirm the new parameters. Just click on “Apply”.

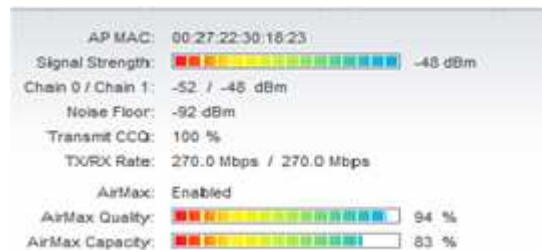
From now on, once the antenna is restarted, we must change the IP address in the browser URL bar in order to continue connected to it.

- Next, it is necessary to establish the operating mode. In order to do that, click on the “Wireless” tab and in one of the antennas we will select the “Access Point WDS” mode, while in the other one we will select “Station WDS”. Remember to always apply the changes with the “Change” button.
- We also need to select the antenna physical type: please select “300 - 22 dBi” from the list that is shown besides the text “Antenna”.

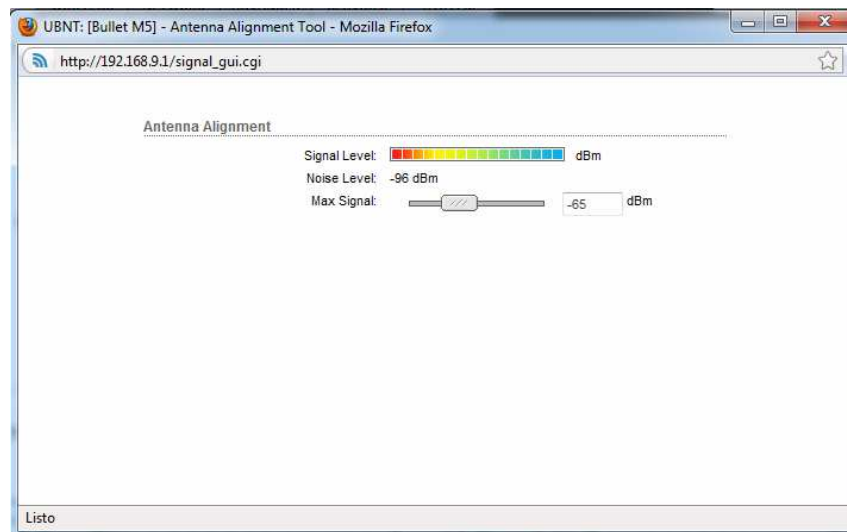


From now on we should start getting received signal in both ends of the communications; this can be seen in the main screen.

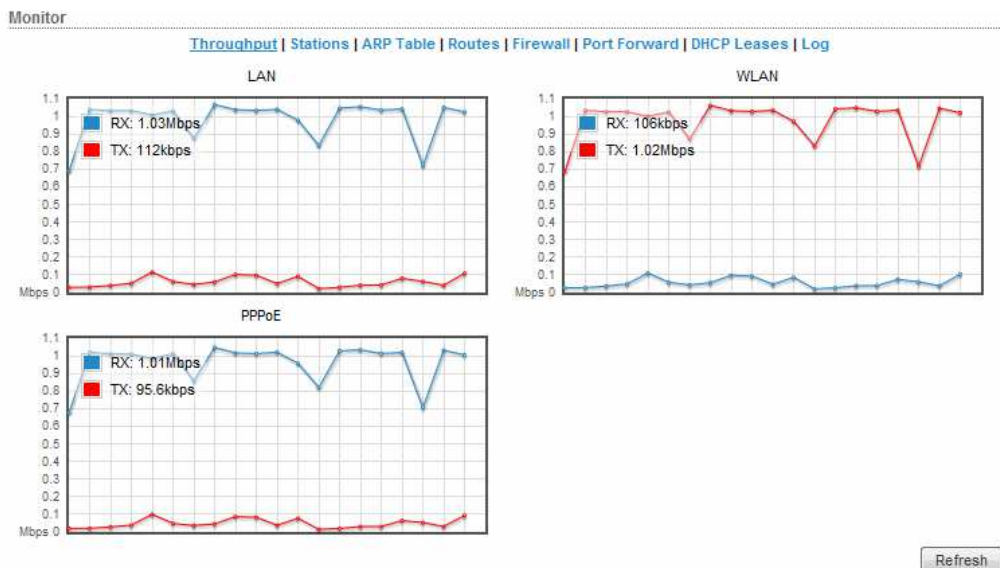
We can align the antennas using the information in this page (particularly with the "Signal Strength" information) in order to attain the strongest possible signal:



Please note that the, the better aligned the antennas are, the higher value of Signal Strength we will get. We can also use the Antenna Alignment utility in the tools menu:



The management window shows statistics of the transmitted and received IP traffic:



In order to monitor the received signal level, connecting to both antennas, aligning them and monitoring only one is enough, as the received level will be equivalent in the other end.

Nothing else is required to connect both antennas, although there are several optional parameters in order to establish security parameters, firewalls, etc.

Refer to the manual to get deeper information:

https://dl.ubnt.com/guides/airOS/airOS_6_UG.pdf

Or use the quick guide:

https://dl.ubnt.com/guides/nanobridge/NanoBridge_M5_QSG.pdf

5. CONFIGURATION OF THE ALVARION ANTENNAS

In order to setup the link between two BreezeNet B14 (or other similar Alvarion antennas) the telnet interface embedded in the units is used. We must have a PC connected to it, by means of a switch or directly (in this case we will substitute the PC by the audiocodec once everything's properly configured).

- After having connected the cable to the computer, check that they are in the same network and that IP connectivity exists (use a Ping command for this purpose, for example). The default IP address of the antenna is 10.0.0.1, although once more it is convenient to change one of them so they can be distinguished once the link is established and they are part of the same local network.

NOTE: *this is the default IP address. Check that it hasn't been changed in any of the antennas before (because different addresses are required to operate the radio link, as stated above).*

- Once we can reach the antenna with a Ping command, we must open a telnet terminal to set it up properly: open a windows command window and type "telnet 10.0.0.1" (or the IP corresponding to the particular antenna). An user level will be asked for. We will type "3" (Administrator). Next, the password is required. The default one is "private". After that, we can start configuring the antenna.
- Check that the three green LEDs in the unit are ON (power supply, network and radio link).
- If not done before, it is important that we change the IP of at least one of the ends from the default address (10.0.0.1) to a different one, i.e: 10.0.0.2. In order to do that, just enter menu 3 (**Basic Configuration**), then menu 1 (**IP Address**) and type the new IP address
- Although we are setting up a symmetrical point-to-point link, one of the antennas must be configured as Base Unit (BU) while the other one must be a Remote Bridge (RB). In order to check that, go to menu 2 (**Unit Control**) and test what's the available target mode in item D of the menu. If it allows you to change to RB mode, the unit is presently a BU, and vice-versa. If they are not different, go to menu 2 and make the required changes so you end up with 1 BU and 1 RB
- From now on we should have signal at both ends. Check that the LED bar is illuminated with, at least, several green LEDs, indicating that the link has enough signal to noise ratio. You will observe that better S/N ratio is got by aligning the antennas properly. Just look for max. S/N.

Nothing else is required to connect both antennas, although there are several optional parameters in order to establish security parameters, firewalls, etc.

IMPORTANT NOTE: it has been observed that, once power is cycled to the antennas, they will not establish the link until we enter the telnet menu of one of them (BU, for example), even if no option is changed. So a PC is necessary to put the link to work.

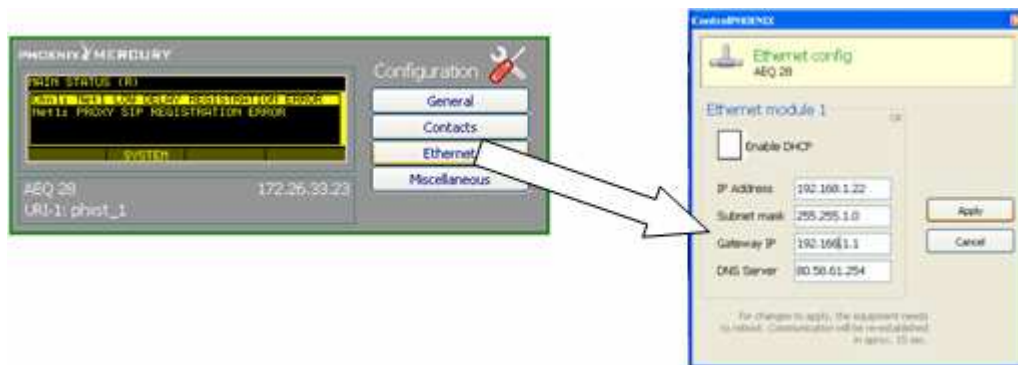
Refer to the manual to get deeper information:

[http://www.intelek.cz/db/repository.nsf/v/E1B3DBF8B18B1D48C12576CD00442889/\\$file/Manual_Alvarion_breezenet_B_6.0_system_manual.pdf](http://www.intelek.cz/db/repository.nsf/v/E1B3DBF8B18B1D48C12576CD00442889/$file/Manual_Alvarion_breezenet_B_6.0_system_manual.pdf)

6. CONFIGURATION OF PHOENIX AUDIOCODEC USING REMOTE CONTROL SOFTWARE

All audiocodecs in the Phoenix family (except for Phoenix Mobile) can be remotely controlled through ControlPHOENIX software installed on a PC that is connected to the equipment by IP. Once we have access to the equipment, the first thing to do is to configure its IP address. When we connect the Phoenix to a network, we must have a free IP address within the range allowed in that local network. This network must be the same in the antenna.

- ✓ As an example, if the Ubiquiti antennas have IP addresses 192.168.1.20 (default one) and 192.168.1.21 (after we have changed it), we can assign the Phoenix codec (and the used PCs) IP addresses 192.168.1.22 & 192.168.1.23, with a net mask 255.255.255.0, for example. The IP and mask of the Phoenix unit is configured using the remote control software, in Ethernet menu under equipment configuration.



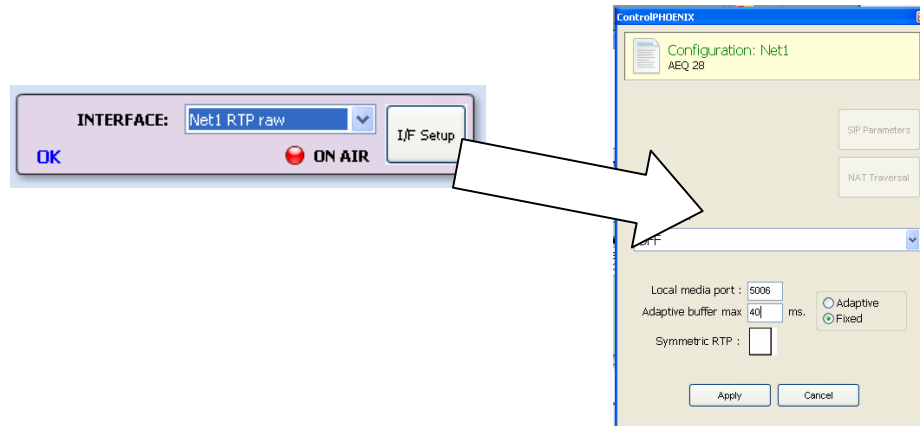
Accessing the IP configuration of a Phoenix Mercury

- ✓ With Alvarion units, if the antennas have the addresses 10.0.0.1 (default one) and 10.0.0.2 (after we have changed it), we can assign the Phoenix (and involved PCs) IP addresses 10.0.0.3 & 10.0.0.4, with a net mask 255.255.0.0, for example. The IP address and mask is configured using the remote control software, in Ethernet menu under equipment configuration.
- ✓ Next, we must configure the selected audio channel to work in IP mode, "RTP Raw".



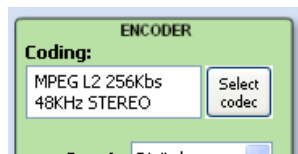
- ✓ Make sure that the Alvarion equipment has port 1024 open. This is not required for the Ubiquiti units.
- ✓ For Phoenix Mercury make sure that the Local port and the port where the other unit is sending audio to are the same. In order to define the port we're sending audio to, when you don't want the default port 1024, it should be included on IP you're calling to with <IP>:<port> format.

- ✓ After all this is done, select the audio coding mode. We recommend that the buffer mode is set as FIX, with a minimum size of around 40ms.

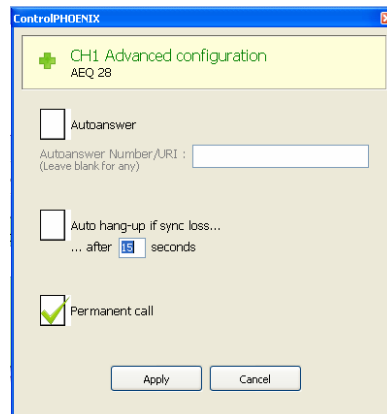


Advanced configuration of RTP mode: buffer size and type

- ✓ Next we need to select the desired coding algorithm.

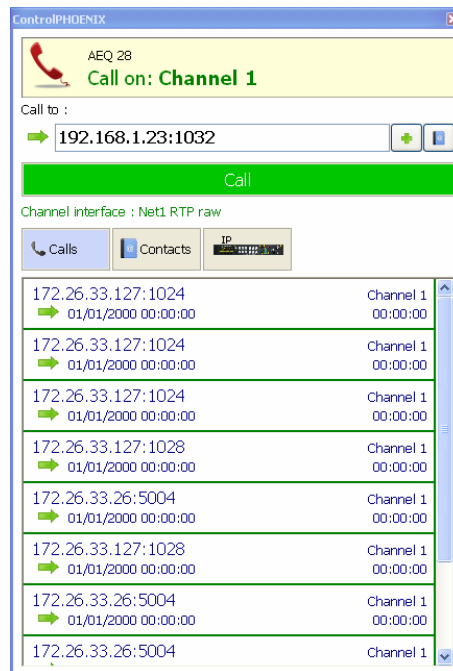


- ✓ In order to ensure a reliable link that automatically re-establishes after electric cuts or link failures, it is strongly recommended that you set the advanced channel configuration as follows:



- ✓ Now we only need to establish the communication. In order to do so, click on the CALL button at the main remote control screen corresponding to this codec. We must fill in the "Call to:" field with the IP of the other Phoenix we want to connect to.

Note that, if only the IP address is filled in, audio stream will be sent to port 1024 by default. In case we need to specify a different port, just type it in the same line, with the following format: <IP_address>:<dest_port>, as shown in the following example:



The communication will be established by clicking on the green CALL button (assuming that we have already done the same in the other end).

IMPORTANT NOTE:

This setup and THE CALL must be repeated in the other Phoenix (RTP protocol is connection-oriented, not call-oriented). Use the same audio coding scheme, of course.

You can establish the connection using SIP DIRECT mode in a similar way, by calling the units with the convention name <user>@<IP>. This procedure is further detailed in the relevant Phoenix User Manual and has the advantage of avoiding the need to call in both ends.

Once both Phoenix show synchronization (green LED), the link is completed.



**APPLICATION NOTE:
R+D DEPARTMENT, AEQ**

MADRID (SPAIN)

AEQ, S.A.
Calle Margarita Sala 24
Parque Científico Leganés Tecnológico
28919, Leganés (Madrid)

aeqsales@aeq.es
www.aeq.eu